

Stem cell and cell therapeutics research in Lithuania

Bernardas Morkunas
Head of Business Development

NORTHWAY®

StemCellRC®

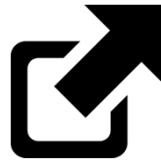
Lithuanian biotech

Biotechnology is considered as one of 2014-2020 Smart Specialisation priority fields in Lithuania



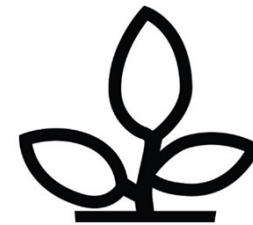
Large and fast growing

- Revenue \$150M+
- CAGR 20%
- 10+ notable companies



Export oriented

- Around 90% of revenue comes from exports
- Industry export CAGR of 16.1%
- Overall Lithuanian export growth 10.2%



Key exports

- Pharmaceutical proteins
- Enzymes and nucleic acids
- Reagents and devices for molecular bio

Company highlights

Several highly successful Lithuanian biotechnology companies



Sicor Biotech UAB

Acquired by Teva Pharmaceuticals

Revenue €50-100M

Develops and produces recombinant biopharmaceuticals

Was headed by Prof. V. A. Bumelis, now CEO of Biotechpharma UAB



Fermentas UAB

Acquired by ThermoFisher

Revenue €50-100M

Develops and produces enzymes and other products for life science research and diagnostics.

Products are widely used worldwide.



Biotech startups

Lithuania is a place for a large number of biotech startups

ATOID™

FERENTIS

Violet Cell

BIOSEKA
ANTISENSE ANTIMICROBIALS

io integrated
optics®

alovita
MULTIFUNCTIONAL CARE BED

pipelinepharma

Life Sciences Baltics
Vilnius, September 12 – 14, 2012

NORTHWAY®

Stem Cell RC®

Valleys, business clusters, and incubators

Valley, location	MTEP directions	Funding, million, \$
Santara Valley Vilnius	Biotechnology Innovative Medical Technologies Molecular Medicine	125,51
Sunrise Valley Vilnius	Laser and Light technologies Material Sciences Nanotechnologies	122,22
Santaka Valley Kaunas	Sustainable chemistry and pharmaceuticals Future Power Engineering	96,52
Nemunas Valley Kaunas	Agro biotechnology Food technology	72,16
Maritime Valley Klaipėda	Marine Environment Coastal research	78,46

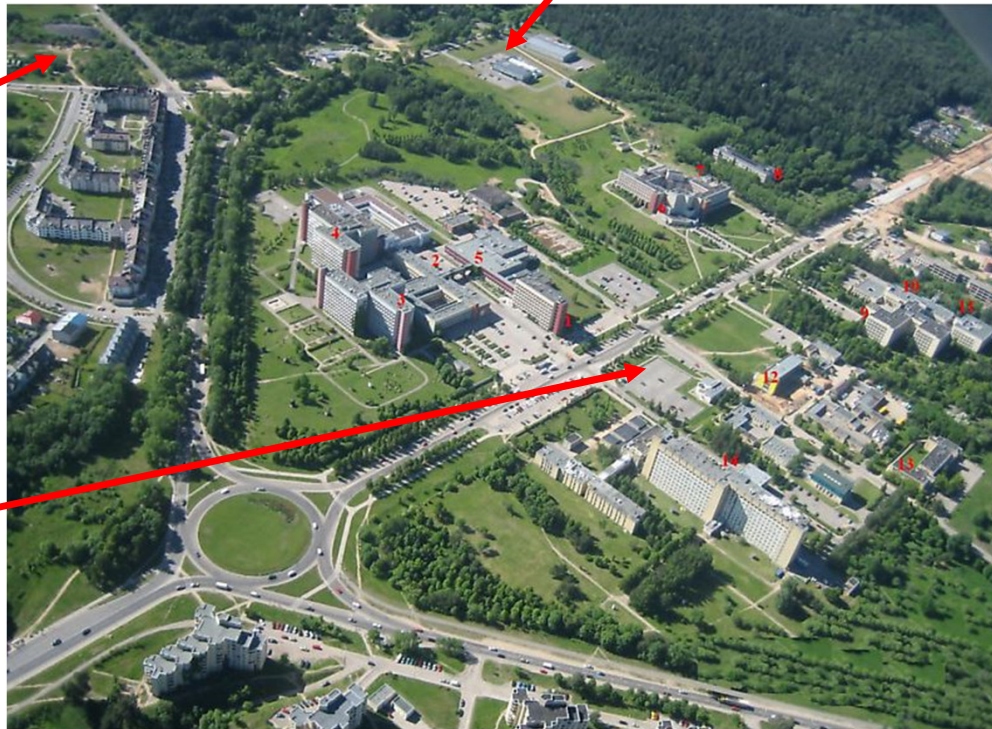


Santara valley

Sicor Biotech / TEVA

Biotechpharma
BOD Group
MOOG

Centre for Innovative
Medicine (CIM)



Stem Cell Research Center

Key People

Algirdas Ziogas, PhD

Head of R&D

Vilnius University (Molecular Genetics)
University of Zurich (PhD in Biochemistry)
12 years as PostDoc in U. of Zurich, U. of
Bern, and University Hospital Zurich

Dziugas Paulauskas, PhD

Managing Director

Kaunas Medical University (Pharmacy)
Institute of Biotechnology (PhD in
Biochemistry)
10 years of research experience
21 years as a manager Life Sciences

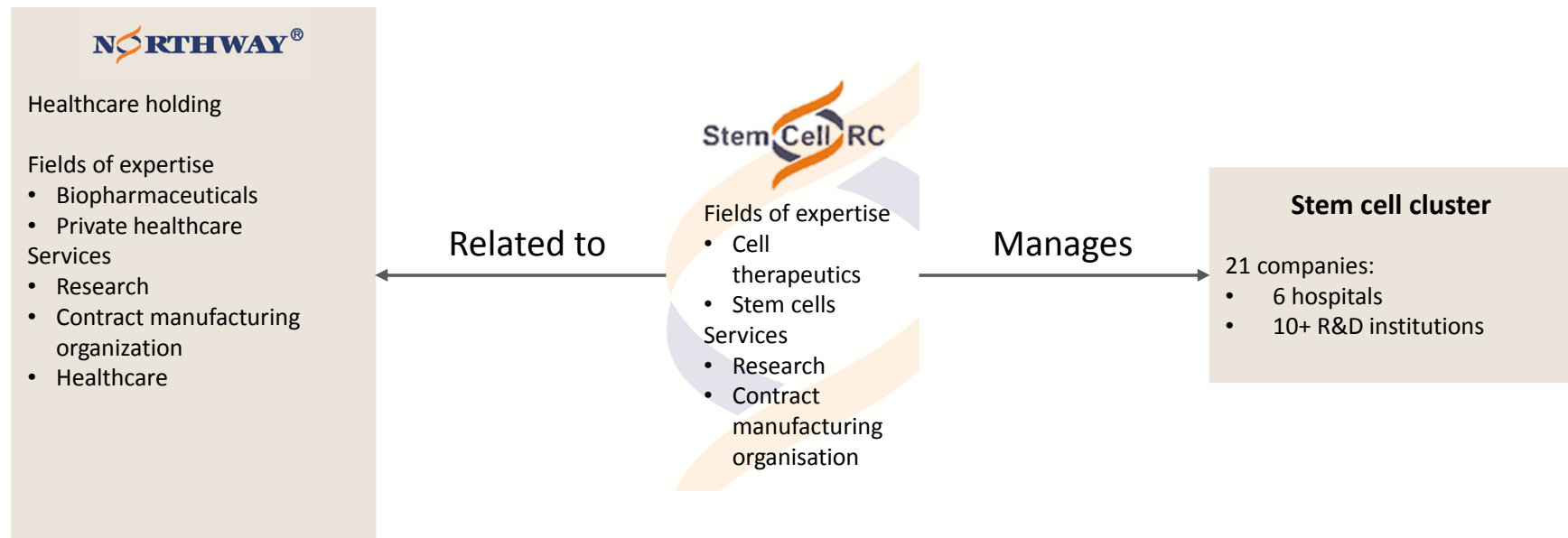
Kristina Mateikiene

Project manager

Kaunas Medical University (Pharmacy)
10 years as a consultant and manager
in pharmacy

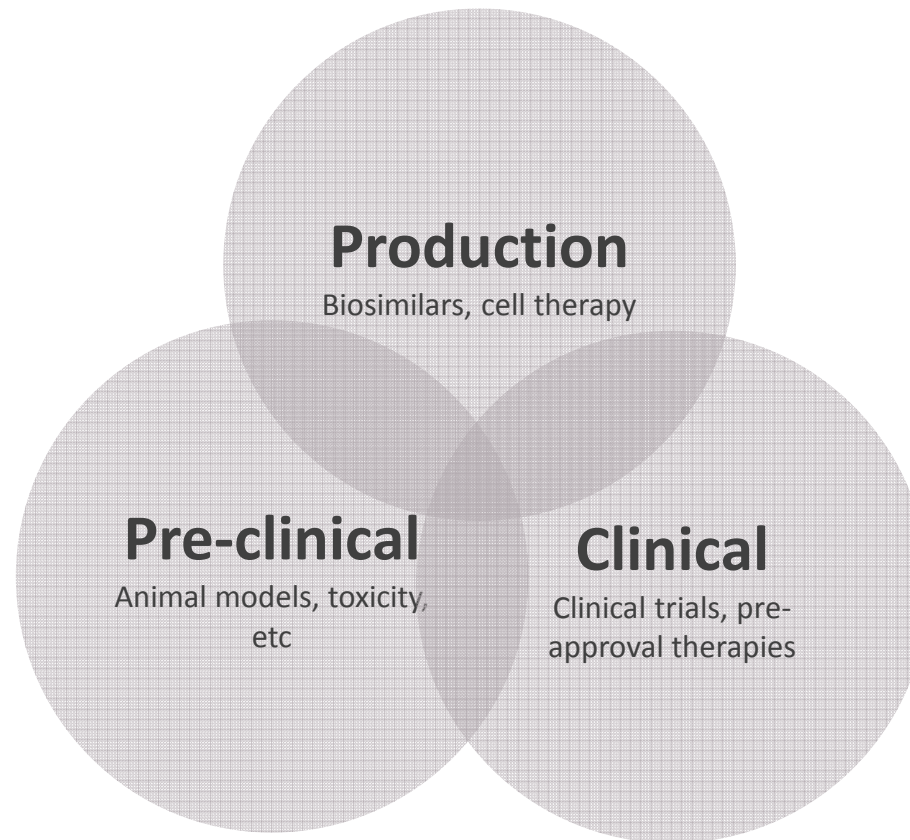
What is Stem Cell RC?

Stem cell and cell therapeutics research center and contract manufacturing organisation, part of Northway group, Stem Cell Cluster manager



Stem Cell and Regenerative Cluster

CDMO, CRO, clinical and pre-clinical research under one roof



Selected Stem Cell Cluster member profiles



Biotechpharma

- Biopharmaceuticals CDMO
- BigPharma and Biotech clients
- 100 staff
- 450 sqm cGMP (A-D)
- State of the art R&D laboratories



VU Santariskiu hospital

- Leading clinical hospital
- 4'000 staff
- Specialist in numerous fields
- National medical R&D center



Northway medical centers

- Private healthcare
- 200 staff
- Wide array of services
- Highly respected healthcare

Kardivita

- Cardio-oriented healthcare
- 20 staff
- Highly specialized, both invasive and non-invasive approaches

Lirema

- Optometrist R&D and healthcare
- 40 staff
- Network of several center across Lithuania

Stem Cell RC facilities



Mokslininku Str. 4

- 5 R&D labs
- Admin space



S. Zukausko Str. 21

- 180 sqm cGMP (Class C, D)
- Proximity with operating theatre
- Patient wards
- Co-location with private hospital



Cluster partners

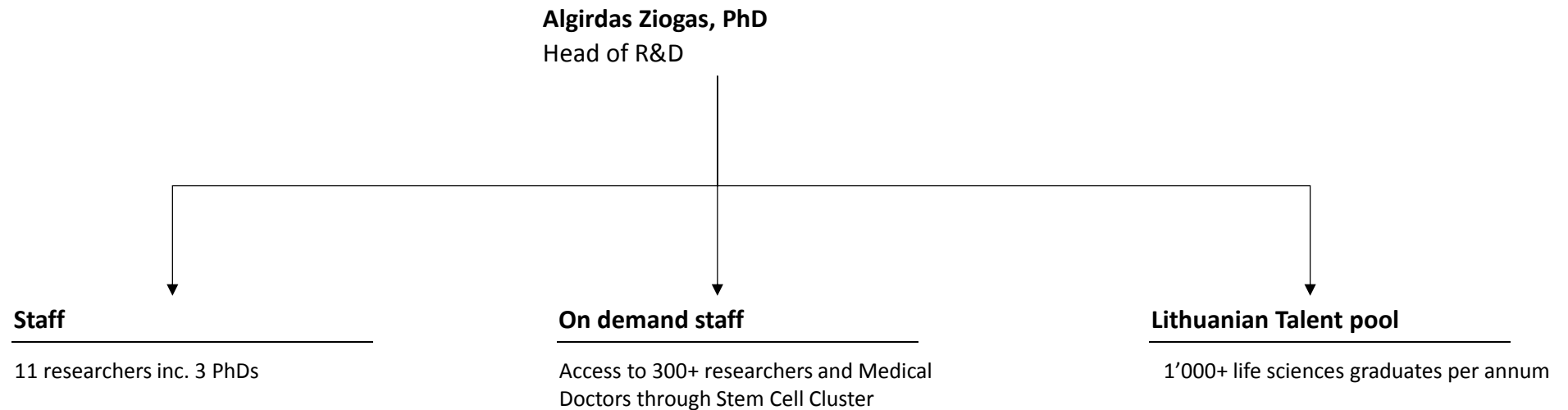
- 450 sqm cGMP (Class A-D)
- Labs for biotech and medicine
- 4'500 healthcare staff
- 500 scientific staff

Facilities and laboratories (Biotechpharma)

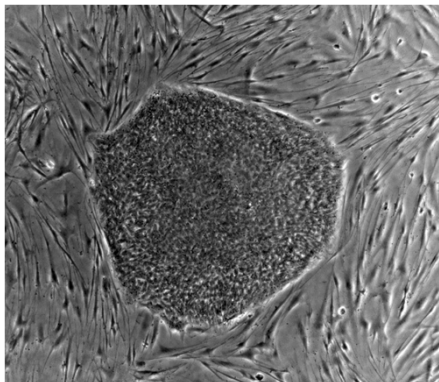


Research staff

Access to 30+ qualified R&D staff and high potential growth opportunities



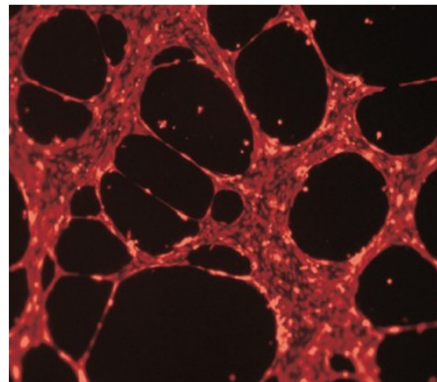
Current research activities



Stem cell analysis

Special emphasis on:

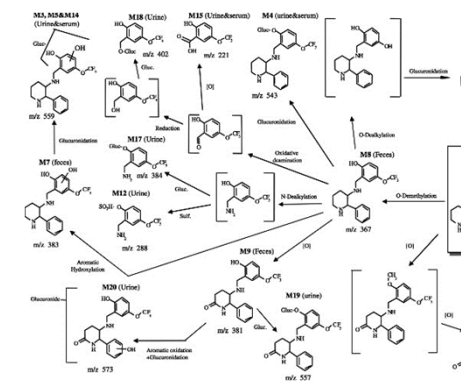
- Endothelial progenitor cells
- Mesenchymal stem cells (umbilical cord, adipose tissue, bone marrow)
- Chondrocytes
- Cancer stem cells
- iPSCs



Development of preclinical models

Special emphasis on:

- Wound healing and angiogenesis
- Heart repair



New biomaterials and metabolomics approaches

Special emphasis on:

- Mass spectrometry and metabolite studies
- Therapeutic protein immobilization strategies

R&D partnerships

Looking for partnerships for Horizon 2020, Eureka, Eurostars, and others



Contact us

Bernardas Morkunas

Head of Business Development

Bernardas.morkunas@biotechpharma.lt

+370 678 07361

+370 5 2195254

